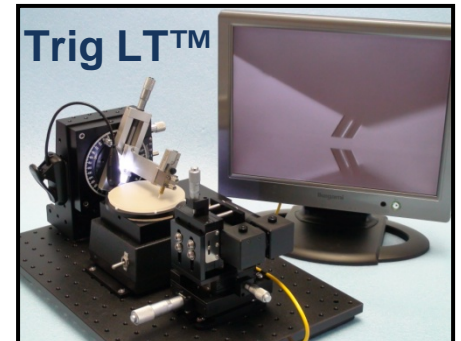
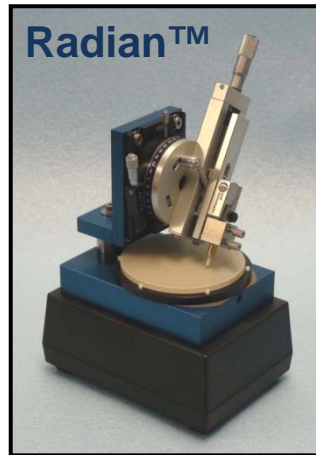


VARIABLE ANGLE CONTROL  
 REAL-TIME VIDEO MONITORING (Trig LT™)  
 ADAPTERS FOR VARIOUS FIBER TYPES  
 PRODUCTION AND R&D APPLICATIONS  
 COST-EFFECTIVE PROCESSING



### SPECIFICATIONS AND FEATURES

#### Inspection Performance (Trig LT™)

##### **Real-Time Inspection**

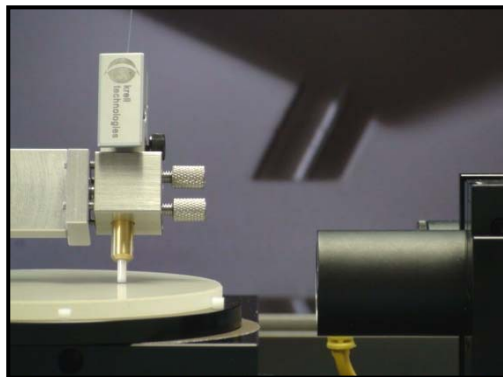
80x Magnification

##### **Video Signal**

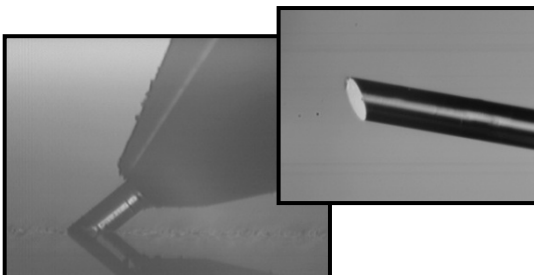
EIA/NTSC Compatible

##### **Video Interface**

BNC Connectors



Trig LT™ provides a video inspection module to offer real-time monitoring of the fiber during the polishing process.



#### Polishing Performance

##### **Angle Range<sup>1</sup>**

Radian™: 0 (flat) to 45 degrees  
 Trig LT™: 0 (flat) to 50 degrees

##### **Angle Repeatability**

± 0.5 degrees, typical

##### **Polishing Motion**

Random Orbital

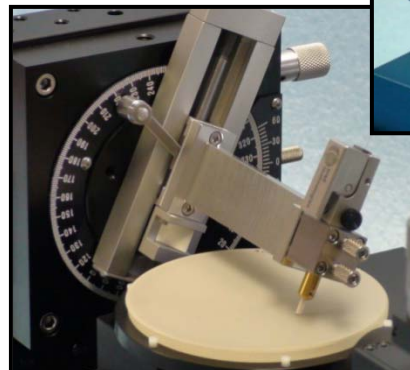
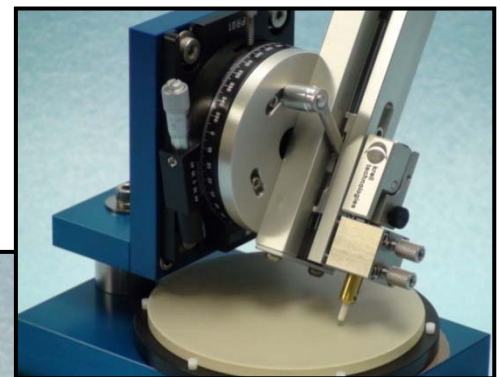
##### **Polishing Speed**

User Adjustable

##### **Film Size**

4 inch Diameter

<sup>1</sup> Referenced off fiber diameter (i.e. 8° for APC style connector polish)



Radian™ and Trig LT™'s precision rotary stages can be continuously adjusted to form a wide range of fiber tip angles.